

# LABORATORY



Faucet, so called single lever "mixers".

1 PIECE

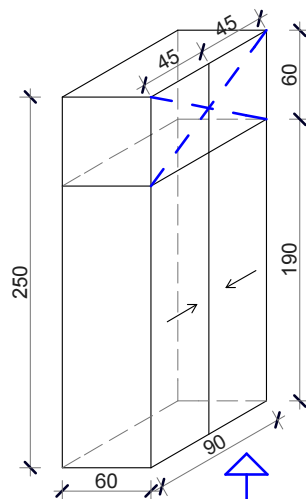
Laboratory chairs with swivel stool, vertically adjustable. Black material with leatherette cover. Approx. measurements (+/-15%): Back height 53 cm, Back width 44 cm, Depth 44 cm, Adjustable arms, Lumbar support.

4 PIECES



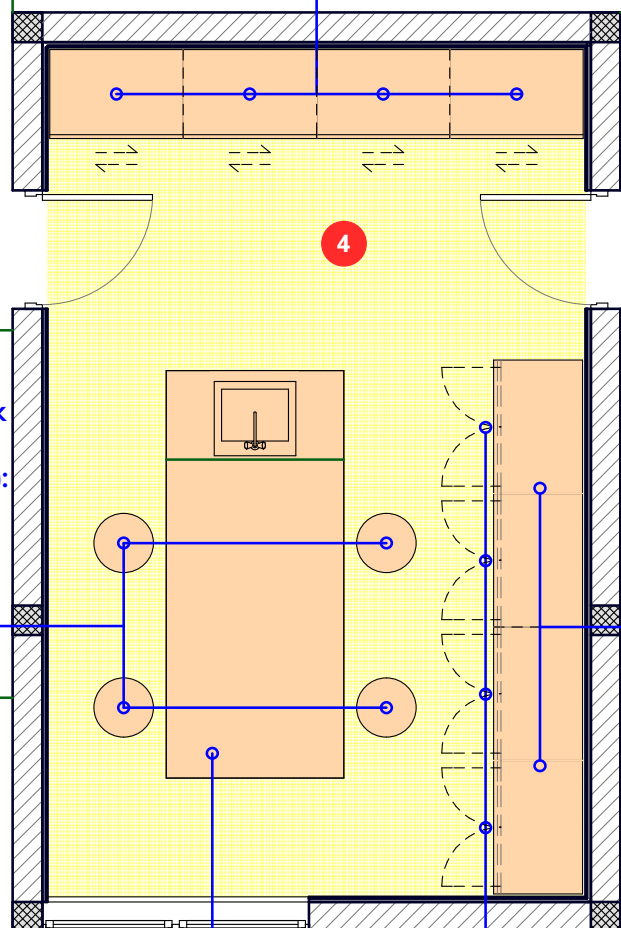
Laboratory table and sink unit. Laboratory table should be made of the Melamine laminate top resist or Epoxy resin material., dimensions 275/120/90 cm, in white color, mounted on "C" or "H" shape frame made from the galvanised and epoxy powder coated steel. Sink unit with built-in bowl (bathtubs) and underbench cabinet, dimensions 120/60/90 cm. Sink worktop dimensions 120/60 cm, with central built-in bowl, inner dimensions 60/40/25cm, and draining area. The price includes the need to drain the sink. Sink worktop and bowl are made of ceramic. The underbench cabinet is suspended, mounted on stainless steel C-frame with 3 full hinged doors made of the plastic coated plywood and with one internal shelf in each of them, in white color.

1 PIECE



Closet with top mounted cabinet. Total dimensions 90/60/250 cm. Closet is with 2 full sliding doors, dimensions 90/60/190 cm, with 5 inner shelves. Top mounted cabinet is with 2 full hinged doors, dimensions 90/60/60 cm, with one inner shelf. Made of plastic coated plywood, in white color. All doors are with cilindrical locks.

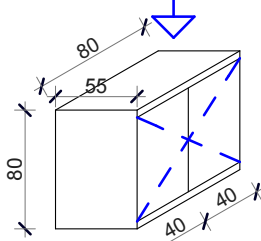
4 PIECES



Laboratory bench. Dimensions 180/60/90 cm. Load carrying structure (frame) is made of steel tubes welded into a solid compound.

Form of the bases are in "C" or "H" shape easels. Frame is made from the galvanised and epoxy powder coated steel. Stability of pedestal must be achieved by leveling the base easels. Worktop surface is made of the Melamine laminate top resist or Epoxy resin material. Worktop surface should be in white color, with smooth surfaces including seams, corners and edges.

2 PIECES



Cabinet below laaboratory benches, total dimensions 80/55/80 cm. Cabinet is with 2 full hinged doors, dimensions 80/60/80 cm, with one inner shelf. Made of plastic coated plywood, in white color. All doors are with cilindrical locks.

4 PIECES



Instantaneous heater, capacity of 10 liters.

1 PIECE

## NOTE

Photos that are attached do not represent the final appearance of elements but as an example for easier understanding and bidding (prices). The final appearance in agreement with the future users.

### PROJECT ORGANIZATION:



"Nik Com" d.o.o. - Nikšić  
adresa: ul. Milana Papića bb  
tel/fax: +382(0)40 246 596  
mob: +382(0)69 309 588  
pib: 02369621  
pdv: 40/31-00807-2  
žiro račun: 530-15313-52

Author of the project:

Heading Designer:

Arh. Miličić Dragutin, dipl. ing.

Responsible Designer:

Arh. Miličić Dragutin, dipl. ing.

Asistant:

*D. Miličić*

Creation date and place of seals:

JANUARY 2015.

INVESTOR:

MINISTRY OF AGRICULTURE AND  
RURAL DEVELOPMENT  
MONTENEGRO

Object:  
BIP Bar

Location:

Types of technical documentation:  
Main project to equip the facility

Part of the technical documentation:  
ARCHITECTURE

Sheet name :  
Laboratory

SCALE:  
R=1:50

Sheet number:  
5

Revision date and place of seals: